

AGENDA

Meeting: CALNE AREA BOARD
Place: Calne Town Hall, Bank House, The Strand, Calne, Wiltshire, SN11 0EN
Date: Tuesday 8 February 2011
Time: 7.00 pm

Including the Parishes of Calne North, Calne Rural, Calne South and Cherhill, Calne Central and Calne Chilvester and Abberd

The Area Board welcomes and invites contributions from members of the public. The Chairman will try to ensure that everyone who wishes to speak will have the opportunity to do so.

If you have any requirements that would make your attendance at the meeting easier, please contact your Democratic Services Officer.

Refreshments and networking opportunities will be available from 6.30 pm.

Please direct any enquiries on this agenda to Alexa Smith (Democratic Services Officer), on 01249 706610 or alexa.smith@wiltshire.gov.uk

or Jane Vaughan (Calne Community Area Manager), on 01247 721447 or jane.vaughan@wiltshire.gov.uk

The papers connected with this meeting are available on the Council's website at www.wiltshire.gov.uk

Press enquiries to Communications on direct lines 01225 713114 / 713115.

Wiltshire Councillors

Cllr Alan Hill, Calne South and Cherhill
(Chairman)
Cllr Christine Crisp, Calne Rural (Vice
Chairman)
Cllr Chuck Berry, Calne North

Cllr Howard Marshall, Calne Central
Cllr Anthony Trotman, Calne Chilvester
and Abberd

Items to be considered	Time
<p>1. Chairman's Welcome and Introductions (<i>Pages 1 - 2</i>)</p> <p>The Chairman will welcome Councillor John Thomson, Deputy Leader.</p>	7.00 pm
<p>2. Apologies for Absence</p>	
<p>3. Minutes (<i>Pages 3 - 12</i>)</p> <p>To approve and sign as a correct record the minutes of the meeting held on 7 December 2010.</p>	
<p>4. Declarations of Interest</p> <p>Councillors are requested to declare any personal or prejudicial interests or dispensations granted by the Standards Committee.</p>	
<p>5. Chairman's Announcements (<i>Pages 13 - 16</i>)</p> <p>The Chairman will provide information about the results of the waste consultation, a proposed new Council-wide street trading scheme, Fairtrade fortnight, consultation on the Wiltshire childcare sufficiency assessment and the results of the leisure consultation.</p>	7.10 pm
<p>6. Partner Updates (<i>Pages 17 - 24</i>)</p> <p>To receive an update from the partners listed below:</p> <ol style="list-style-type: none"> a. Wiltshire Police – to include an update from Councillor Chris Caswill regarding the Wiltshire Police Authority b. Wiltshire Fire and Rescue Service (attached) c. NHS Wiltshire (attached) d. Calne Community Area Partnership e. Calne CAYPIG (Community Area Young People's Issues Group) – to include a youth project proposal (attached) f. Town and Parish Councils. 	7.20 pm
<p>7. Community Resilience - Town and Parish Council Emergency Plans</p> <p>Nicholas Bate, Emergency Planning Officer, will give a short presentation about local emergency plans.</p>	7.40 pm
<p>8. Your Local Issues</p> <p>Councillors will provide an update on community issues and</p>	7.55 pm

progress on Area Board working groups. This will include:

- a. Skate board park working group
- b. Cycle network working group
- c. Highways working group
- d. Turn off the lights update.

9. **Area Board Funding** (*Pages 25 - 30*)

8.10 pm

To consider two applications to the Community Area Grants Scheme, as follows:

- a. Calne Twinning Association – seeking £918 towards the production of a promotional leaflet to extend the reach of the twinning association out to a wider range of people in the Calne Community Area
- b. Wiltshire and Berkshire Canal Trust – seeking £1,783 towards the repair and refurbishment of Chaveywell Wharf.

Councillors will also be asked to consider a proposal to submit a request to Cabinet that £5,344 is ring-fenced and carried over to 2011/12 to be used by the Area Board Highways working group to supplement the implementation of locally prioritised highways schemes in 2011/12.

10. **Community Area Grant Scheme Feedback**

8.20 pm

The meeting will be asked how best to receive feedback from organisations that had received Community Area Grants.

11. **Cabinet Representative**

8.30 pm

Councillor John Thomson will give a short overview of his role as Deputy Leader and as Cabinet member for Adult Care, Communities and Libraries.

12. **Close** (*Pages 31 - 32*)

8.45 pm

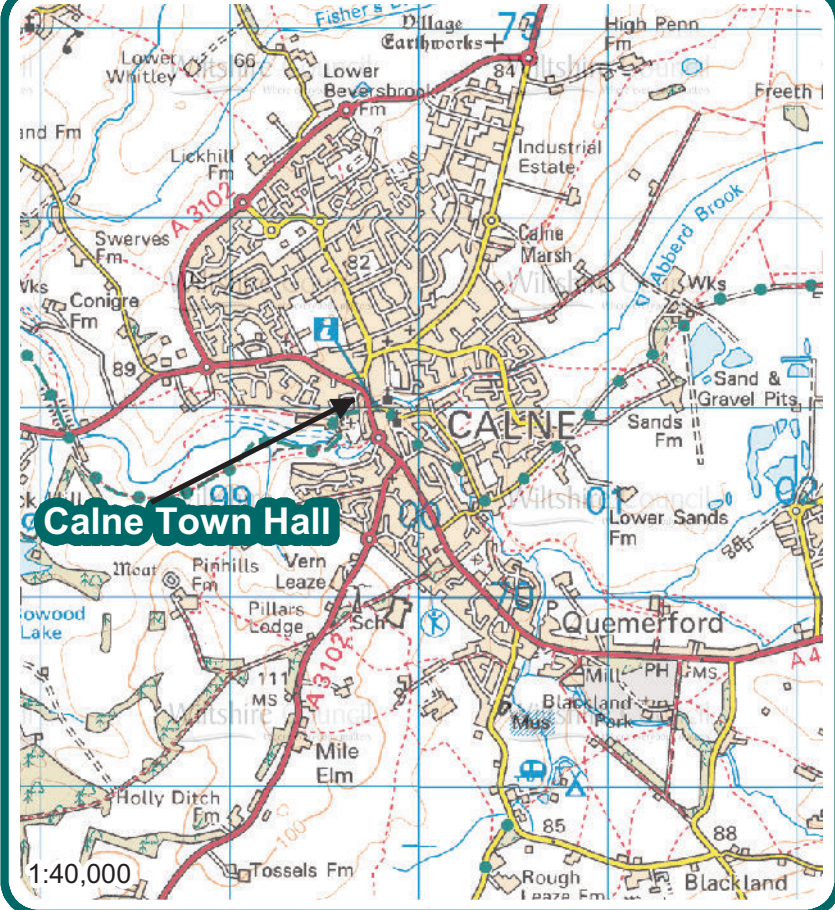
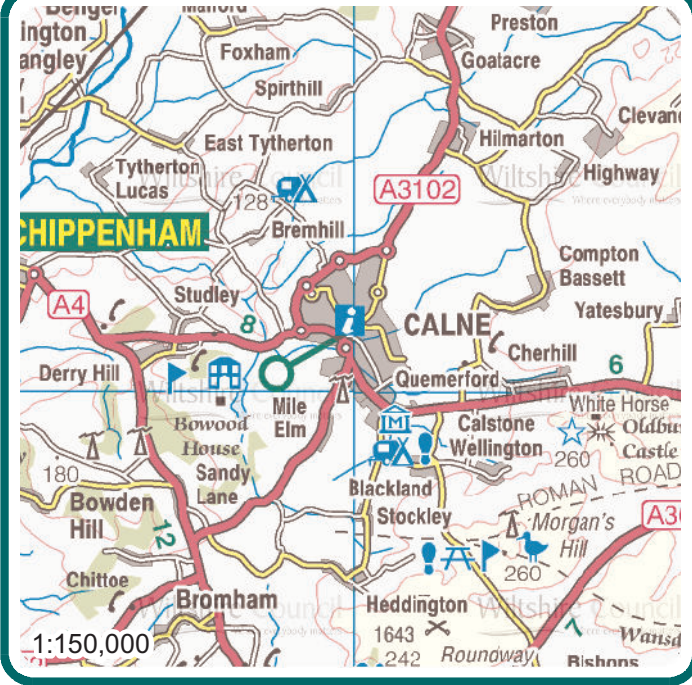
The Chairman will set out arrangements for the next meeting.

Future Meeting Dates

Tuesday, 19 April 2011
7.00 pm
Beverbrook Sports Facility

Tuesday, 28 June 2011
7.00 pm
Calne Town Hall

Tuesday, 23 August 2011
7.00 pm
Cherhill Village Hall



Calne Town Hall
The Strand
Calne
SN11 0EN



 Where everybody matters



MINUTES

Meeting: CALNE AREA BOARD
Place: Heddington Village Hall
Date: 7 December 2010
Start Time: 7.00 pm
Finish Time: 9.20 pm

Please direct any enquiries on these minutes to:

Alexa Smith (Democratic Services Officer), on 01249 7066120 or
alexa.smith@wiltshire.gov.uk

Papers available on the Council's website at www.wiltshire.gov.uk

In Attendance:

Wiltshire Councillors

Cllr Alan Hill (Chairman), Cllr Chuck Berry, Cllr Howard Marshall and
Cllr Anthony Trotman

Cllr Allison Bucknell (Portfolio Holder for Customer Care) and Cllr Keith Humphries
(Cabinet Representative for Health and Wellbeing)

Wiltshire Council Officers

Will Kay (Youth Development Coordinator), Alexa Smith
Jane Vaughan, Community Area Manager).

Town and Parish Councillors

Calne Town Council – C Boase, Colin Viner and Greg Widger

Calne Without Parish Council – Richard Aylen and Edwin Jones*

Cherhill Parish Council – Shauna Bodman*

Heddington Parish Council – Mary Fox (Clerk) and Lynne Sargeant

Hilmarton Parish Council – Richard Broadhead

Partners

Wiltshire Police – Sergeant Philip Connor

Wiltshire Fire and Rescue Service – Mike Franklin

CAYPIG – Jordan Crook and John Palfrey

Calne Area Transport – Anne Henshaw

Calne Community Area Partnership – David Evans*
CCSF – Ross Henning

Members of public in attendance: 25
Total in attendance: 51

<u>Agenda Item No.</u>	<u>Summary of Issues Discussed and Decision</u>	<u>Action By</u>
1.	<p><u>Chairman's Welcome and Introductions</u></p> <p>The Chairman welcomed everyone to Calne Area Board and introduced the Councillors and Officers present. The Chairman welcomed Councillor Keith Humphries (Cabinet Representative for Health and Wellbeing).</p> <p>The Chairman received a petition from Caroline Conway regarding installation of a pedestrian crossing at Lake View. The petition was signed by 102 individuals and asked Wiltshire Council to consider as a matter of urgency the installation of a pedestrian crossing across the A4 road in the vicinity of the Lake View development, Quemerford, so that residents could safely cross the main road to gain access to the only footpath available at that point.</p> <p><u>Decision</u> The petition was received by the Chairman of Calne Area Board and would be passed to the relevant Cabinet Representative, Councillor Dick Tonge (Highways and Transport), for consideration.</p>	
2.	<p><u>Apologies for Absence</u></p> <p>Apologies were received from Councillor Christine Crisp, who was unable to attend the meeting due to ill health of a close family member, and Councillor Roy Golding (Calne Town Council).</p>	
3.	<p><u>Minutes</u></p> <p>The minutes of the meetings held on 24 August and 26 October 2010 were approved and signed as correct records.</p>	
4.	<p><u>Declarations of Interest</u></p> <p>Councillor Tony Trotman declared an interest in the Community Area Grant application from Singchronize (agenda item 8b), as close family members took part in this group. Councillor Trotman spoke on this application, but did not vote.</p>	
5.	<p><u>Chairman's Announcements</u></p> <p>The Chairman drew attention to the written announcements included in the agenda pack. The Chairman also provided an update about RAF Lyneham and information on land withdrawn from the initial site options report for the Wiltshire and Swindon aggregate minerals site allocations document.</p>	

	<p>Wiltshire Council was pushing the Ministry of Defence for a decision on the future of Lyneham before Christmas. The Council was extremely concerned about the future use of the site and the impact its closure would have on the local community and surrounding towns and villages. Councillor Jane Scott, Leader of Wiltshire Council, had written to the Secretary of State for Defence, Rt Hon Dr Liam Fox MP, to request that a decision was made soon. A copy of the letter was available to view at the Area Board meeting.</p> <p>The following initial site options presented within the Wiltshire and Swindon aggregate minerals site allocations document have been withdrawn from further consideration (as at 1 November 2010) at the request of the landowner:</p> <p>Site reference C1 (part of) - land near Compton Bassett/Quemerford</p> <p>C4 - land near Compton Bassett/Quemerford</p> <p>C6 - land south of Calne</p> <p>C7 - land south of Calne</p> <p>C9 - land north of Bromham</p> <p>C10 - land north of Bromham</p> <p>C12 - land near Studley, west of Calne</p> <p>C13 - land near Studley, west of Calne</p> <p>C14 - land near Studley, west of Calne.</p>	
6.	<p><u>Partner Updates</u></p> <p>a) The written update from Wiltshire Police was noted. Sergeant Phil Connor explained to the meeting that Inspector Kate Pain was now the Chairman of the Wiltshire Police Federation. Inspector Steven Cox would take over from Inspector Pain in the Calne Community Area. The Chairman would thank Inspector Pain for all her work with the Area Board.</p> <p>Sergeant Connor noted excellent work had taken place with Calne CCTV and PCSO Gray had been very successful with the Calne Shop Watch Scheme.</p> <p>Councillor Trotman alerted the meeting to an issue with cars being keyed in the Curzon Street area.</p> <p>A concern was raised about the length of time taken to answer a call to the non emergency police number, 0845 4087000.</p> <p>b) The written update from Wiltshire Fire and Rescue Service was noted. Group Manager Mike Franklin added that the number of</p>	

fires in the Community Area was at a two year low. He highlighted the risks associated with lighting candles at home and invited owners of thatched properties to take up the offer of home fire safety checks by calling directly using the freephone number 0800 3897849 or requesting a service online from the website: <http://www.wfb.org.uk/>. Please also get in contact to have smoke alarms correctly fitted (though there could be a twelve week delay while waiting for new stock).

c) The written report from NHS Wiltshire was noted.

d) The written update from Calne Community Area Partnership was noted.

e) CAYPIG had held a meeting on 12 November 2010 to discuss the skateboard park. They came up with the idea of a twelve hour bike ride for young people to raise funds for the project. CAYPIG were also looking into funding opportunities from organisations.

Another meeting was held on 29 November at the existing skateboard park. From this meeting a plan was drawn up and had been passed to Ian Perry at Maverick Skateboards.

Calne Extreme were running regular activities on Wednesday and Thursday evening and special events and projects on other days of the week. It cost £10 to become a member and this included a free Calne Extreme hoodie. Please see Calne Extreme notice board at Priestley Grove Youth Centre for project details or contact calneextreme@wiltshire.gov.uk or 01249 812509.

The large amount of help received by the Bluez n Zuz discos from volunteers was underlined.

f) Cherhill Parish Council provided an update about the Tommy Croker Memorial Playing Field. The funding application that was considered at the last Area Board meeting had been deferred, pending further information about an award linked to the central government play builder scheme. The project had subsequently been awarded this funding from Government and work would start at the end of January 2011.

Cherhill and Yatesbury are in the North Wessex Downs Area of Outstanding Natural Beauty and had formed a project group. Please get in touch with the Parish Council if you would like to become involved.

Hilmarton Parish Council requested the Area Board write to Councillor Tonge (Cabinet Representative for Highways and

	<p>Transport) to support a local review of speed limits. A letter had already been written by James Gray MP after he spent time with the Community Speed Watch team.</p> <p><u>Decision</u> The Area Board would consider the request from Hilmarton Parish Council to write to Councillor Tonge to support a local review of speed limits and report back to the next Area Board meeting.</p>	
7.	<p><u>Turn Off the Lights</u></p> <p>The meeting was given a chance to prioritise sites for a project to reduce night time street lighting. The votes would be added to those that had already been received and the ballot would be closed this evening.</p> <p>A concern was raised regarding communication to people living in identified sites. The Community Area Manager explained that the sites had been put forward by local people and information had been provided in the press, on the local radio, online and in the community hub and the library. When priority sites had been established, people living in these areas would then be consulted with in order to look into which lights they would or would not like turned off. The Community Area Manager would welcome suggestions on how communication could be improved for community ballots in the future.</p> <p>The results of the ballot were as follows: Top priority = A4 - Marden Hill to Cherhill 2nd = Greenacres Way/ Beversbrook Road (Bypass) 3rd = A4 through Calne 4th = Fynamore Gardens 5th = Stickleback Road 6th = Newbury Avenue.</p>	
8.	<p><u>Community Area Grants</u></p> <p>Consideration was given to the three applications made to the Community Area Grants Scheme.</p> <p><u>Decision</u> North Wessex Youth Corps of Drums were awarded £950 to provide uniforms for band members.</p> <p><u>Reason</u></p>	

	<p><i>The application meets the 2010/11 grant criteria and it addresses ambitions laid out in the Calne Community Area Plan to develop cultural, recreation and sporting activities that capture imagination and encourage involvement.</i></p> <p><u>Decision</u> Singchronize were awarded £1,000 for equipment for the new contemporary community choir.</p> <p><u>Reason</u> <i>The application meets the 2010/11 grant criteria and it addresses ambitions laid out in the Calne Community Area Plan to develop cultural, recreation and sporting activities that capture imagination and encourage involvement</i></p> <p><u>Decision</u> Derry Hill United FC were awarded £1,285 for moveable goalposts.</p> <p><u>Reason</u> <i>The application meets the 2010/11 grant criteria and it links to the Calne Community Area Plan ambition to develop sporting activities that encourage involvement.</i></p>	
9.	<p><u>Wiltshire Council's New Approach to Providing Face to Face Customer Access to Council Services</u></p> <p>Wayne Smith, Customer Services Operations Manager, introduced a DVD about the new proposals to provide face to face contact with Wiltshire Council customers. This was followed by a short question and answer session.</p> <p>The information desk at the Bank House would continue to signpost and provide advice to customers, though the grant for the service from Wiltshire Council had been cut to bring the North in line with the rest of the county. The Project Manager for the community hub was unable to attend but asked for it to be noted that the hub was interested in being a face to face venue. The community hub had been identified as an ideal space for Officers to meet with customers and Colemans Farm was also under consideration as a possible access point location.</p> <p><u>Decision</u> Wayne Smith would contact the community hub regarding use as a venue for providing face to face contact with Wiltshire Council customers.</p>	

10.	<p><u>Possible Future Health and Social Developments in the Calne Community Area</u></p> <p>Dr Paul Harris, Senior Partner at Patford House Surgery, provided information about possible health and social developments in the Calne Community Area. This covered the following main points:</p> <ul style="list-style-type: none"> • Why the surgery needed to move (the lease expired in a few years time, CQC and DDA requirements, parking issues, a Government White Paper) • Opportunities linked to a move (links with local authority, social and dental services and providing consultant services closer to patients) • The present situation (outline support had been received from NHS Wiltshire, preliminary discussions had been held with Wiltshire Council, there was support from other GP practices and interest from dentists and pharmacists and consultation had started to take place). <p>Dr Harris explained that he was looking for support from the Area Board and local people, help from Wiltshire Council and NHS Wiltshire to identify funding streams and suggestions from the people of Calne Community Area. The use of the community hub as a place to consult with local people was highlighted.</p> <p>The Area Board should be kept informed of future developments.</p>	
11.	<p><u>Your Local Issues</u></p> <p>Councillors provided an update on community issues and progress on Calne Area Board working groups.</p> <p>a) Councillor Marshall added to the update on the skateboard park working group given by the CAYPIG by thanking the young people involved for all their hard work.</p> <p>b) Councillor Berry spoke about the cycle network working group. Calne Area Transport had drawn down their funding and started research. Concrete surfaces should start to be put in place by Spring 2011.</p> <p>c) As Councillor Crisp had presented her apologies, information about the highways working group would be presented at the Area Board meeting in February.</p>	
12.	<p><u>Cabinet Representative</u></p> <p>Councillor Keith Humphries gave a short overview of his role as Cabinet Representative for Health and Wellbeing. The health element of his role related to public health and the wellbeing</p>	

	<p>element to prevention and protection services.</p> <p>Concern was raised regarding the landfill site at Lower Compton and environmental health issues. Councillor Humphries would provide his contact details for the individual who asked about this issue.</p>	
13.	<p><u>Close</u></p> <p>The next Area Board meeting would be held at 7.00 pm on Tuesday 8 February 2011 at 7.00 pm at Calne Town Hall, with refreshments available from 6.30 pm. As this was the last Area Board meeting of the year, the Chairman wished everyone a Happy Christmas and invited the meeting to listen to a lovely performance from Singchronize choir.</p>	

This page is intentionally left blank

Chairman's Announcements - 8 February 2011

Waste Consultation Results

Those of you who attended Area Board meetings during the summer will recall the presentations about the Council's proposal for changes to Wiltshire's waste collection and recycling service.

The consultation finished on 20 August 2010. There is a report on the full results of the consultation that can be seen on the Wiltshire Council website <http://www.intelligencenetwork.org.uk/environment/>, or if preferred, hard copies can be made available.

The proposed service changes are planned for Summer 2011, and residents will be kept informed throughout the process.

Invitation to Comment on a Proposed New Council-Wide Street Trading Scheme

There is currently no harmonised street trading policy for the Wiltshire Council area. This is because the former District Councils controlled street trading in different ways. The Licensing Committee agreed to introduce a new harmonised consent street trading scheme across the Wiltshire Council area. Council Officers have produced a draft scheme for formal consultation with all interested parties and would like to invite general comments and feedback on the proposed scheme.

A full copy of the proposed scheme and consultation survey is available on the Wiltshire Council website, <http://www.wiltshire.gov.uk/council/constitutions.htm>. All interested parties should return written responses to the Wiltshire Council Licensing Team by 17 March. Written responses should be emailed to alissa.davies@wiltshire.gov.uk or returned to the Wiltshire Council Licensing Team at the Monkton Park Office.

Fairtrade and the Wiltshire Fairtrade Coalition

Fairtrade is based on the idea that small producers in the developing world should be paid a price for their produce that covers the cost of production and gives the family a living wage.

The producer makes a long term agreement in advance with the Fairtrade purchasing company that ensures a guaranteed minimum price. In return the producer commits to working to progressive standards of production and environmental protection.

Under the agreement children are not forbidden to work but bonded labour is prohibited and children must go to school. There is a fair trade promotion stand available to view before the meeting if you would like to find out more.

Childcare Sufficiency Assessment

Local authorities have a duty, under the Childcare Act 2006, to assess the sufficiency of childcare in their area and produce a report. Wiltshire's second report has now been drafted and it is out for consultation on the Wiltshire Council website.

Any comments should be forwarded to the early years team using the response sheet provided on the website by 20 March 2011, <http://www.wiltshire.gov.uk/schoolseducationandlearning/earlyyearsandchildcare/childdcaresufficiencyassessment.htm>. The final report will be published on the website before 1 April 2011.

Leisure facilities – Our plans to invest and improve Consultation Analysis Report

Community Area View – Calne

A total of 63 responses were received, which is 2% of the total received responses. Of these responses 98% were completed questionnaires and 2% were letters or emails.

Of the total responses received 29% were male and 67% were female and 3% considered themselves to have a disability. A total of 2% of respondents were aged 18 to 24, 11% were aged 25 to 34, 36% were aged 35 to 44, 11% were aged 45 to 54, 27% were aged 55 to 64, 7% were aged 65 to 74 and 3% were aged 75 and over. Calne had the highest response rate for 35 to 44 year olds and 55 to 64 year olds.

Of the respondents 31% indicated an interest in being involved or running their leisure centre. A total of 49% of respondents visited a leisure centre weekly, with 33% daily, 11% monthly, 2% less often and 5% have never used a leisure centre. Calne had the highest response rate from daily users of the leisure centre.

In specific response to the questions;

- 93% agreed with the principle that providing high quality, modern facilities with a variety of activities will encourage more people to become more active and furthermore 59% of respondents strongly agreed
- 91% agreed that local communities should be able to directly influence and / or manage their local services and only 3% of respondents disagreed
- 87% agreed that the price of using leisure facilities can be a barrier to taking part
- 68% of respondents felt that pricing should be reflective of the size and quality of facility whereas 59% disagreed that a standard pricing policy across all facilities, irrespective of the size and quality would work for Wiltshire
- 85% of respondents agreed that the council should try to provide multi-purpose indoor leisure facilities within 20 minutes travel time from home
- 88% agreed that introducing car parking charges at leisure facilities could be a barrier to stop people taking part

In terms of activities the most popular are swimming (27%), using the gym (15%), fitness classes (13%), Badminton (3%) and Squash (3%). Other facilities within leisure centres also proved popular with the inclusion of café facilities (13%), meeting spaces (8%) and crèche (4%). The response rate to the inclusion of café facilities and meeting spaces were the highest responses from any community area.

There were 77 comments made, which is 2% of the total comments received with reference to the leisure review, with the following comments being the most highly stated;

- Happy with facilities/staff – 9%
- Greater/more variety of classes/courses/exercise options/timings – 8%
- Lower/affordable prices/cost, value for money – 7%
- Cleanliness of facility – 7%
- Keep the centre open – 5%

Interesting points with regards the replacement, refurbishment and devolvement proposals were;

- 4% believed the facility should have support from the council



Wiltshire Fire & Rescue Service

Wiltshire and Swindon Fire Authority

Report for Calne Area Board

Fires

WFRS attended 10 accidental fires within the Board's area during November and December 2010.

These incidents have involved a range of different items including 4 chimney fires, 1 tractor, a kitchen, a chip pan, an industrial light fitting, a small fire during a science experiment and an electricity pole.

It is pleasing to report that we saw a decrease in the number of deliberate fires that we attended during the same period, from 3 to 1. This involved a fire in a wheelie bin. WFRS continues to work with Wiltshire Police and other agencies to identify persons who are responsible for deliberate fire setting.

Injuries

There were no fire related injuries reported during this period.

RTC'S

Unfortunately there have been 3 incidents for November and December, occurring on the A4 between Chippenham and Calne, the A342 at Derry Hill and on the road at Blacklands.

Community Safety

Stay Safe and Warm this winter. With winter weather well and truly here, Wiltshire Fire & Rescue Service is keen to warn people to stay warm but safe as the colder weather continues to take hold.

The following advice will help you reduce your fire risk this winter:

Fires and heaters - open fires can provide a relaxing and atmospheric way to keep warm, whereas portable heaters are handy to move around - but it's important to use them safely:

- Always use a fire guard to protect against flying sparks and hot embers from an open fire and make sure embers are under control and properly put out before you go out or go to bed.
- Keep portable heaters away from curtains and furniture and never use them for drying clothes. Always unplug electric heaters when you go out or go to bed.

Electric blankets

Electric blankets can help you keep warm during the cold nights, but they can be a danger if not used properly - 440 injuries result from every 1,000 fires started by an electric blanket.

- Never use hot water bottles in the same bed as an electric blanket, even if the blanket is switched off.
- Unplug blankets before you get into bed, unless they have a thermostat control for safe all-night use.
- Don't leave electric blankets folded as this damages the internal wiring. Store them flat or rolled up instead.

Candles

Darker evenings can be made brighter by lighting candles but, as with open fires, a naked flame brings risks if not treated carefully.

- Candles should be secured in a proper holder, and away from materials that may catch fire - like curtains.
- It is also very important that candles are put out completely when you leave the room or go to bed.

For a full range of home fire safety advice, visit www.wiltsfire.gov.uk



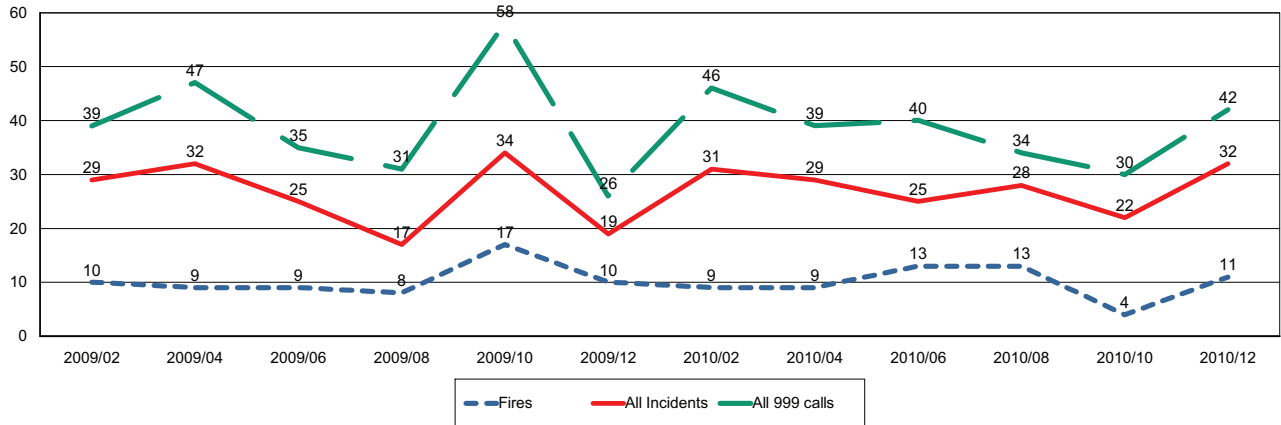
Wiltshire Fire & Rescue Service

Wiltshire and Swindon Fire Authority

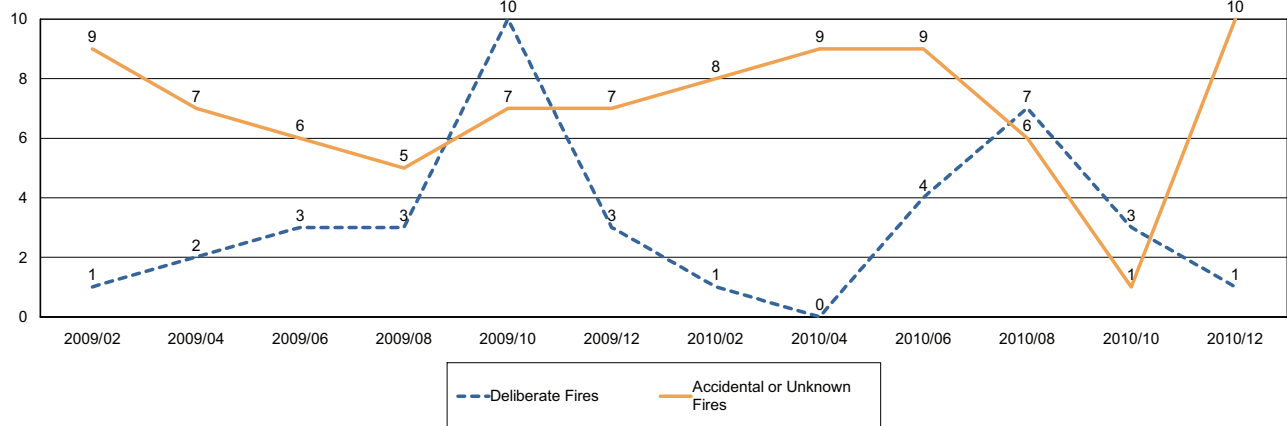
Report for Calne Area Board

The following is a bi-monthly update of Fire and Rescue Service activity up to and including December 2010. It has been prepared by the Group Manager for the Board's area.

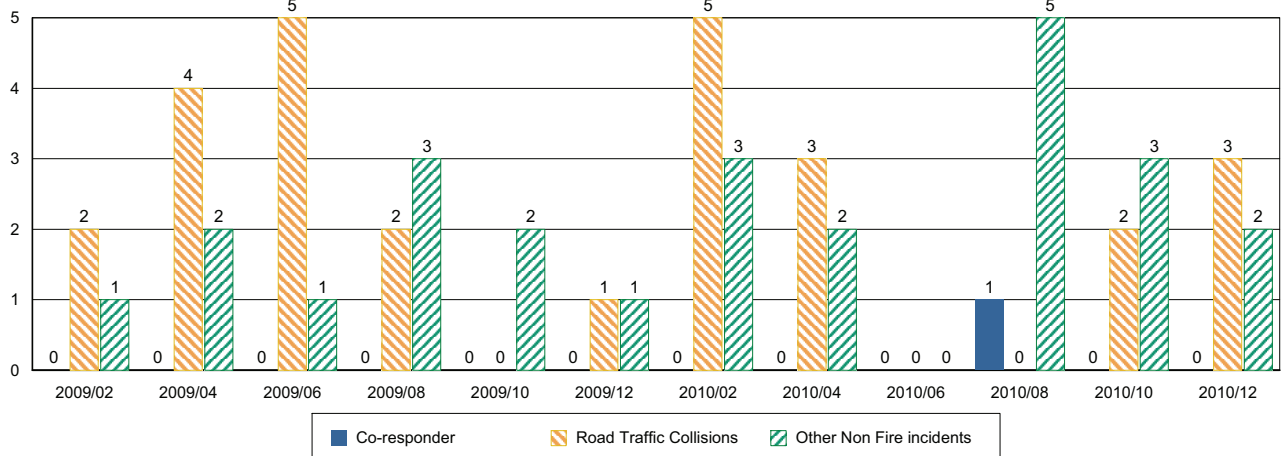
Incidents and Calls



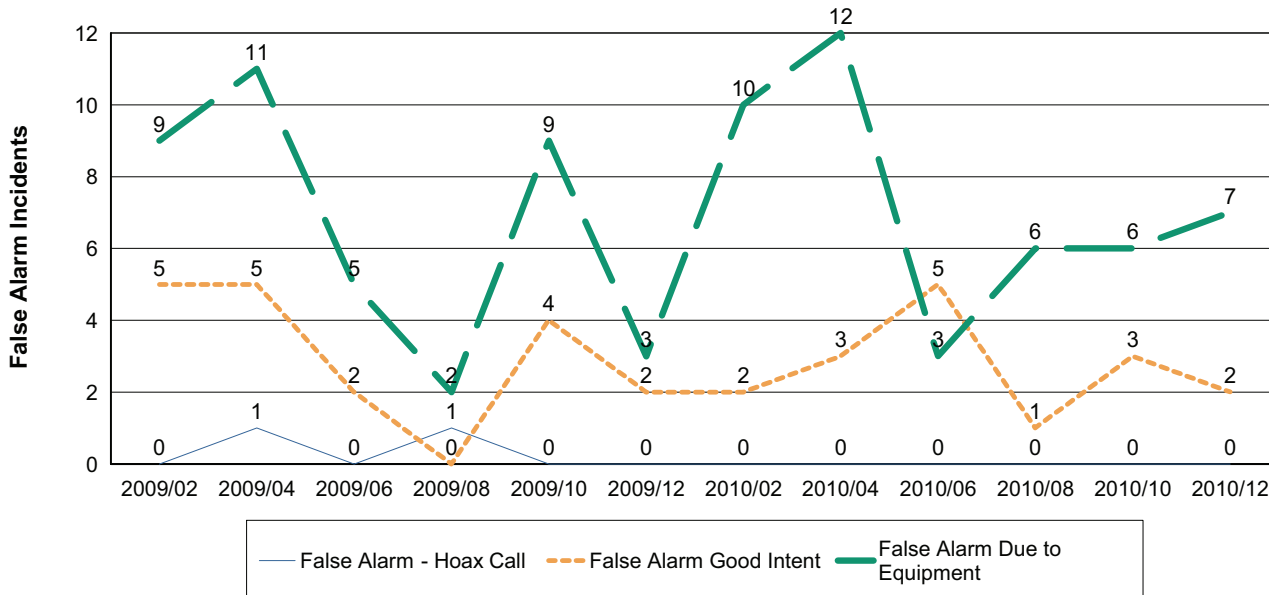
Fires by Cause



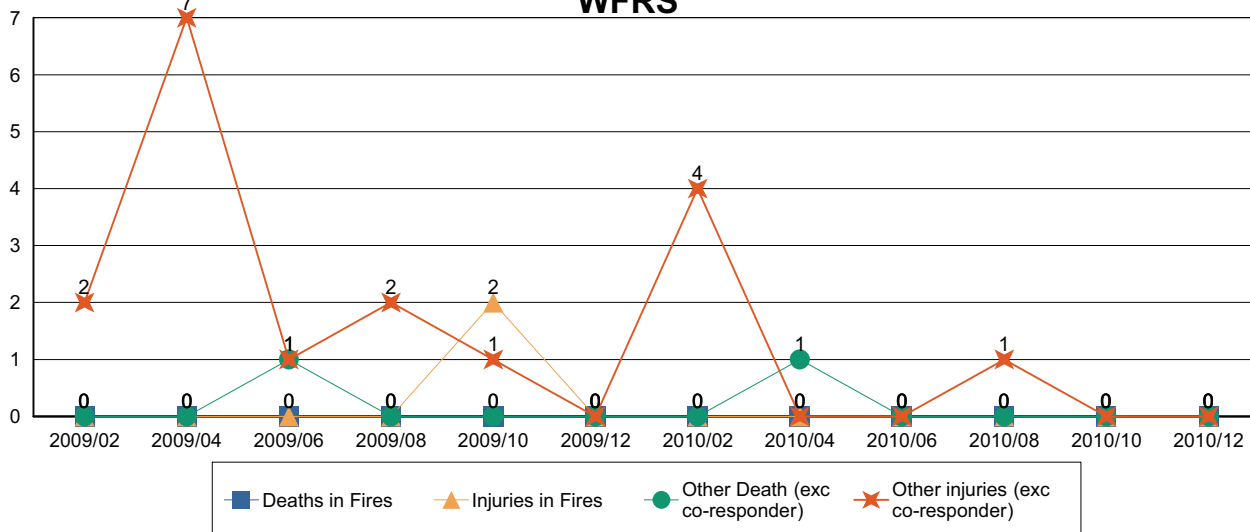
Non-Fire incidents attended by WFRS



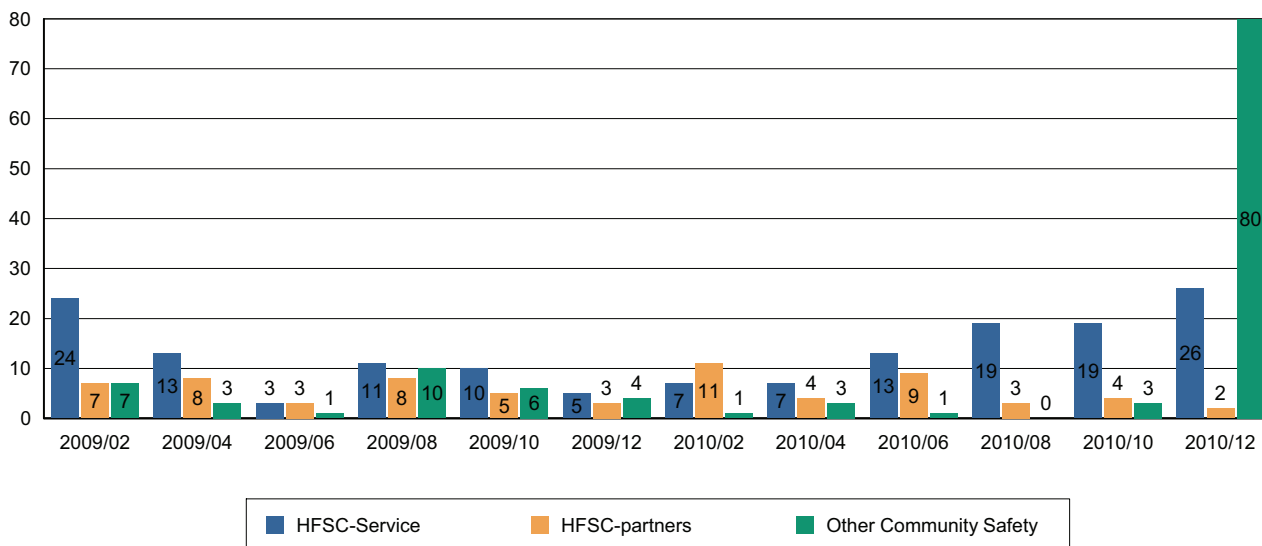
Number of False Alarm Incidents



Death & Injuries in incidents attended by WFRS



Home Fire Safety Checks and other domestic safety



Comments and Interventions overleaf

NHS Update – January 2011

Government announces new vision for public health

The Government's new vision for public health, 'Healthy Lives, Healthy People' was announced by Secretary of State, Andrew Lansley, this afternoon.

'Healthy Lives, Healthy People' also sets out how funding from the overall NHS budget will be ring-fenced for spending on public health in a recognition that prevention is better than cure.

Local government in Wiltshire will take charge of public health from a national budget which could be in the region of £4 billion. Wiltshire Council will continue to work with Corporate Director of Public Health and Wellbeing, Maggie Rae, to provide professional advice and leadership around key challenges like reducing harm from tobacco and alcohol, improving sexual health and ensuring the local population is protected from the impact of major incidents and epidemics such as pandemic flu.

The Department of Health is seeking your views on these changes. Have your say by responding to the public consultation:

http://www.dh.gov.uk/prod_consum_dh/groups/dh_digitalassets/@dh/@en/@ps/documents/digitalasset/dh_122347.pdf

Investors in Carers scheme launched

They provide care for ill, frail or disabled family members worth £511 million a year in the UK, and yet carers often pay a price in terms of jobs, friendships and even health. Carers are twice as likely as others to become ill.

Now a new awards scheme will reward GP practices and others who give special attention to the needs of these unsung heroes and heroines. Aimed at GP practices who do a really good job of taking care of those who care, it awards bronze, silver and gold accreditation as a reward for some of the best practice that exists across the county, as well as acting as a spur to others to do better.

New mums happy with their care

The maternity service provided by Wiltshire Community Health Services has been rated highly by mums in an independent survey commissioned by the Care Quality Commission.

The survey looked at women's experiences of care provided by hospital and community staff, from early pregnancy to four weeks after the birth. Wiltshire Community Health Services provides maternity services at Princess Anne Wing at Bath Royal United Hospital, at the birthing units at Chippenham Hospital and Trowbridge Hospital and at the birthing centres in Frome and Paulton.

The national survey involved responses from over 25,000 women. In Wiltshire, 238 women responded, all of whom had had a live birth between 1st and 28th February 2010 and were aged 16 years or older. Women who had a home birth were also eligible.

Managing flu-like symptoms

The advice issued by Maggie Rae covers how best to protect yourself and your family against cold and flu viruses, how to treat symptoms as they emerge, and how to make best of use of the wide range of NHS services available if you need them, in order to ensure services like 999 and A&E are kept free for emergencies only.

“If you come into contact with droplets, either in the air, on hands, or hard surfaces, you can catch the viruses. Sneeze into tissues and wash hands afterwards. Remember: ‘catch it, bin it, kill it’. This advice works for all coughs, cold and flu-like illnesses.

“If you are over 65 years of age, a pregnant woman or under 65 years of age with a chronic medical condition you have not yet had your seasonal flu jab we would encourage you to contact your surgery to make an appointment.

“If you do get symptoms such as cough, fever, aching limbs and weakness, you can manage this at home by drinking plenty of fluids, taking over-the-counter medications containing paracetamol and resting.”

Please be mindful to think of other routes to medical treatment rather than calling 999. The following points should be helpful when deciding who to contact.

- Pharmacies offer over-the-counter medicines and advice. As well as being open during regular retail hours, they operate an out-of-hours service on a rota basis
- Call NHS Direct for advice on 0845 46 47 or go to www.nhsdirect.nhs.uk. They can give a wide range of advice and information about many conditions
- Use the minor injuries units at Chippenham and Trowbridge for cuts, breaks, burns and other injuries – but not for colds, flu or vomiting
- Make an appointment with your own GP. Your doctor may be happy to give you medical advice over the telephone if you are unable to make an appointment.
- An out-of-hours service is also available if your GP surgery is closed – the Wiltshire-wide service 0300 111 5717
- If it is a genuine emergency, go to your local A&E department or call 999 for an ambulance.
- NHS Choices is a website where you can find up-to-date and expert advice on a range of illnesses and complaints, as well as find your nearest NHS services. Visit www.nhs.uk
- NHS Direct provides a confidential telephone service, 24 hours a day, to give professional advice and guidance on health issues, call: 0845 46 47.

The next Board meeting of NHS Wiltshire will be held on **Wednesday 19 January at 10am - 2011 at Southgate House**. Members of the public are welcome to attend.

Papers are published a week before the meeting on www.wiltshire.nhs.uk or on request from Stacey Saunders, NHS Wiltshire (tel: 01380 733839, email: stacey.saunders@wiltshire.nhs.uk). For further information or copies of documents referred to above, please contact Jo Howes, Community Engagement Manager, 01380 733929 or jo.howes@wiltshire.nhs

Calne CAYPIG Project 'Places to go - Things to do'

Proposal for consideration by Calne Area Board
8th February 2011

Background

At the Council meeting on 23rd February 2010, the Leader, Jane Scott, announced that it was intended to allocate approximately £100,000 across the eighteen area boards to allow for additional grant by each area board specifically for children and young people's projects or activities. The Leader also pointed out that consultation via Area Boards and Peoples Voice, had in each case, placed youth activities at the top of their priorities. Within that consultation and discussion with young people, the need for activities which take account of transport needs of this group had consistently appeared at the top of their concerns. It is for area boards to determine how they spend this additional money in supporting young people, but they should take into account the need for some provision of extra transport to help youngsters overcome problems.

Calne Area Board sought advice and guidance from the Calne CAYPIG (Community Area Young Peoples Issues Group) with regards to identifying a proposal for the allocation of this funding in ways that will meet the actual needs and aspirations of the largest group of young people that the Area Board currently has a direct dialogue with.

The last CAYPIG Open Space meeting took place on January 20th and included over 60 young people aged between 11 and 19. This was a single issue meeting at which young people used participatory budgeting techniques to identify and cost a wide range of activities and events and then, through discussion and debate, developed a programme of activities for young people to be held during the Easter, summer and half term holidays, with provision for the inclusion of all young people from the community area and specifically for any young people who might be excluded as a result of transport issues.

The CAYPIG is now asking the Area Board to release funds to enable them to implement the programme, with the support of the Calne Youth Development Coordinator.

Outline proposal

The project will be promoted through the display of posters and distribution of flyers at local youth clubs, the Community Hub and local schools (with attention paid to the understanding that not all young people go to John Bentley School), inclusion on the internet via the Sparksite for young people, the Community Area Partnership website and inclusion in the Community Area Network mailing list.

Young people will be invited to put their names forward for a variety of activities and events ranging from overnight camping/orienteering sessions to animation workshop days, positive graffiti workshops and theatre trips

Some of the events will incur an additional contribution. It has been recognised that where a minimal charge is incurred, the turn out rate is increased. This will not exclude those who are from low income homes.

The CAYPIG will come back to the Area Board at its next meeting (April 19th) to advise it of the final programme of events and to publicise the scheme.

Young people will be supported in the organisation and implementation of the project by the Youth Development Coordinator and the Extended Schools Coordinator.

Young people who engage in these activities will be asked to evaluate the project with specific focus upon transport issues.

The CAYPIG will provide an update to subsequent Area Board meetings, giving details of the activities that have taken place and what, if any additional transport arrangements were implemented.

Recommendations:

- 1. That the Area Board commits a budget of £4,285 to a project that provides ‘things to do, places to go’ for young people from the Calne Community Area.**
- 2. That the Area Board delegates to the CAYPIG, with the support of the Youth Development Coordinator, the facility to plan and implement a programme of events through the Open Space Forum, providing they are within the allocated budget of £4,285. This is subject to an update report from the CAYPIG to each area board meeting detailing the progress of the project and, at the end of the project, an evaluation summary providing details of any additional transport arrangements implemented or creating barriers to inclusion.**

Prepared by William Kay (Calne Youth Development Coordinator) and Jane Vaughan (Calne Community Area Manager) for the Calne Community Area Board meeting on 8th February 2011.

Please send comments/queries to:

Jane Vaughan (Calne Community Area Manager)
Area Boards Team
Community, Leadership and Governance
Wiltshire Council
Monkton Park
Chippenham
Wiltshire
SN15 1ER

(01249) 706447 email: jane.vaughan@wiltshire.gov.uk

Report to	Calne Community Area Board
Date of Meeting	8th February 2011
Title of Report	Community Area Grants
<p>Purpose of Report</p> <p>To ask Councillors to consider 2 applications seeking 2010/11 Community Area Grant Funding</p> <ol style="list-style-type: none"> 1. Calne Twinning Association - requesting £918 towards the production of a promotional leaflet to extend the reach of the twinning association out to a wider range of people in the Calne Community Area. Officers recommend a grant of £918 is awarded. 2. Wilts and Berks Canal Trust – requesting £1,783 towards the repair and refurbishment of Chaveywell Wharf. Officers recommend a grant of £1,783 is awarded, conditional upon the balance of funding being in place. <p>To ask the Area Board to ring fence £5,344 and make a request to Cabinet that it can be used by the Area Board Highways working group to supplement the implementation of locally prioritised highways schemes in 2011/12.</p>	

1. Background

- 1.1. Area Boards have authority to approve Area Grants under powers delegated to them by the Deputy Leader and Cabinet member for Community Services (27 February 2010). Under the Scheme of Delegation Area Boards must adhere to the Area Board Grants Guidance for funding.
- 1.2. In accordance with the Scheme of Delegation, any recommendation of an Area Board that is contrary to the funding criteria would need the approval of the Leader, the appropriate Cabinet Member or the Cabinet.
- 1.3. In accordance with the Area Board Grants Guidance officers are required to provide recommendations in their report, however, the decision to support applications and to what level is made by Wiltshire Councillors on this Area Board.
- 1.4. In addition to the applications contained in this report, one other was received which did not meet funding criteria. The applicant subsequently withdrew the application with a view to returning at a future date.
- 1.5. Other groups that have approached the Community Area Manager with a view to putting in applications which do not meet funding criteria have been referred to The Charities Information Bureau (CIB) for advice on other streams of funding that would enable match funding. CIB work on behalf of Wiltshire Council to support community and voluntary groups, town and parish councils to seek funding for community projects and schemes both from the Area Board and other local and national funding sources..
- 1.6. Following awards made and councillor led initiatives implemented so far in the current year the Calne Area Board has a budget of £8,045 for the remainder of the 2010/2011 financial year for community grants, community partnership core funding and councillor led initiatives. (see appendix 1 for further details)
- 1.7. A decision has been made in 2010/2011 that paper copies of funding applications will no longer appear as part of the agenda in an attempt to reduce volume of paper used. However, the application forms will be available on the Wiltshire Council web site and hard copies available upon request.
- 1.8. The 2010/2011 funding criteria and application forms are available on the council's website (www.wiltshire.gov.uk/areaboards) or paper versions are available from the Community Area Manager.

Background documents used in the preparation of this Report	<ul style="list-style-type: none">• Community Area Grant Application Pack 2010/11• Calne Community Area Plan – 2004-14 (incl. 2006/2010 update)
--	--

2. Main Considerations

- 2.1. Councillors will need to be satisfied that grants awarded in the 2010/11 year are made to projects that can realistically proceed within a year of the award being made.
- 2.2. The funding contained within this report forms the final round of funding during 2010/11.
- 2.3. Information about future Area Board funding is not yet available, but will be posted on the Area Boards website as soon as possible.

3. Environmental & Community Implications

Community Area Grants will contribute to the continuance and/or improvement of cultural, social and community activity and wellbeing in the community area, the extent and specifics of which will be dependent upon the individual project.

4. Financial Implications

- 4.1. Awards must fall within the Area Boards budget allocated to the Calne Community Area Board.
- 4.2. If grants are awarded in line with officer recommendations, the Calne Community Area Board will have a balance of £5,344.
- 4.3. If the Area Board seeks and obtains permission to ring fence £5,344 to supplement locally prioritised highways schemes, the Calne Community Area Board will have a balance of £0.

5. Legal Implications

- 5.1. There are no specific Legal implications related to this report.

6. HR Implications

- 6.1. There are no specific HR implications related to this report.

7. Equality and Inclusion Implications

- 7.1. Community Area Grants give all local community and voluntary groups, Town and Parish Councils an equal opportunity to receive funding towards community based projects and schemes.
- 7.2. Implications relating to individual grant applications are outlined within section 8 – “Officer Recommendations”.

8. Officer recommendations

Ref	Applicant	Project proposal	Funding requested
8.1 131	Calne Twinning Association	The production of a promotional leaflet to extend the reach of the twinning association out to a wider range of people in the Calne Community Area.	£918

- 8.1.1. It is recommended that the Calne Twinning Association is awarded a grant of £918 towards the production of a promotional leaflet to extend the reach of the project to a wider range of people in the Community Area.**
- 8.1.2. Officers are of the opinion that this application meets grant criteria for 2010/11.
- 8.1.3. It can be seen to link with aspirations laid out in the Calne Community Area Plan by promoting a sense of community identity, pride and cohesion.
- 8.1.4. The association is keen to develop the links that are held between towns and alongside the chamber of commerce, schools and the Silver Band has recently grown to include a link between local police teams and this year hopes to involve fire and rescue teams and local first aid organisations.
- 8.1.5. The group's aims include developing friendships and knowledge/experience sharing between people from different countries and also within the local community.
- 8.1.6. The group is open to everyone and this application represents an attempt to reach out to more community groups and organisations from across the Community Area, to promote the opportunities that the association presents and to get more local people involved.
- 8.1.7. If the Area Board makes a decision not to fund this project it will be delayed while alternative funding is sought.

Ref	Applicant	Project proposal	Funding requested
8.2 130	Wilts & Berks Canal Trust	The repair and refurbishment of Chaveywell Wharf.	£1,783

- 8.2.1 **It is recommended that the Wilts & Berks Canal Trust is awarded £1,783 towards the repair and refurbishment of Chaveywell Wharf, conditional upon the balance of funding being in place.**
- 8.2.2 Officers are of the opinion that this application meets funding criteria.
- 8.2.3 It also addresses ambitions in the Calne Community Area Plan to increase recreation land and facilities in the area, develop cultural, recreation and sporting activities that capture imagination, use leisure facilities to encourage children and young people to participate, encourage involvement and create greater community cohesion.
- 8.2.4 The project also addresses a Wiltshire Council ambition to ‘increase opportunities to help young people achieve their potential’ through its links with Canoe England which is actively encouraging young people to take up canoeing on restored sections of the canal.
- 8.2.5 The project may also increase local volunteering as the Trust actively encourages volunteers from the local community and provides development opportunities for those volunteers to extend their skills through involvement in training programmes that include activities such as bricklaying, chain saw use, and the operation of excavators.
- 8.2.6 The Wharf is located within Castlefields Park and the project links to the work being done by CARP (Castlefields Canal and River Park Association). CARP has expressed its whole hearted support for this project and acknowledges that the Wilts & Berks Canal Trust is the best placed group to run the project.
- 8.2.7 Wiltshire Council’s Canal Officer has provided a technical assessment (appendix 4) which confirms that the project will allow easier and safer use of the canal and should encourage the use of the water as a recreational resource and that it is his opinion that the Trust will be able to complete the project on the basis of the project costs.
- 8.2.8 Failure to receive an award from the Area Board is likely to mean that the project would be delayed while alternative funding is sought.

8.3 Highways Working Group Scheme Funding

- 8.3.1 The Highways Working Group has been set up by the Area Board to look at Community Area Highways issues from a local perspective.
- 8.3.2 The group met for the first time in October 2010 and recognised that resource allocated to it would have a limited impact upon the schemes arising from the list of local priorities.
- 8.3.3 The group will meet again before the Area Board on 8th February and will provide an update of that meeting on the night.
- 8.3.4 At Calne Area Board meetings held in August and December 2010 members of the public suggested that some of the Area Board budget might be used towards funding local priority schemes.
- 8.3.5 At the Calne ABC (Area Board Coordinating group) meeting held on 11th January 2011 these suggestions were discussed further and it was decided that the Area Board should consider a proposal to:

Submit a request to Cabinet that £5,344 is ring-fenced and carried over to 2011/12 to be used by the Area Board Highways working group to supplement the implementation of locally prioritised highways schemes in 2011/12.

Appendices:	Appendix 1 Calne Community Area Grants Summary 07/12/10 Appendix 2 Grant application – Calne and District Twinning Association Appendix 3 Grant application – Wilts & Berks Canal Trust Appendix 4 Wiltshire Council Canal Officer – technical assessment
--------------------	--

No unpublished documents have been relied upon in the preparation of this report.

Report Author	Jane Vaughan, Community Area Manager Tel: 01249 706447 E-mail jane.vaughan@wiltshire.gov.uk
----------------------	--

CALNE AREA BOARD

Date	Cabinet Member Attending	Location	Area Board Agenda Items (including officer contact details)	Provisional Items
19 April 2011	Councillor Fleur de Rhe-Philippe – Finance, Performance and Risk	Beversbrook Sports Facility	Community Items: Partner items: Corporate items: Workplace Transformation Programme Community Area Grants will be considered.	
28 June 2011	To be confirmed	Calne Town Hall	Community Items: Partner items: Corporate items: Community Area Grants will be considered.	
23 August 2011	To be confirmed	Cherhill Village Hall	Community Items: Partner items: Corporate items: Community Area Grants will be considered.	

Community area manager: Jane Vaughan (jane.vaughan@wiltshire.gov.uk)
 Democratic services officer: Alexa Smith (alexa.smith@wiltshire.gov.uk)
 Service director: To be confirmed

